

## Executive Summary

This report takes all information gathered into a spreadsheet and summarizes the information SMCSIG has been gathering to help mitigate fire risk to schools in member districts. Placed into the report are satellite images of the schools and images of the perimeter of the schools. The information gathered is the distance a school is from the Wildland-Urban Interface, referred to as the WUI in this report. This distance is typically measured in meters. This information is the transition between wildland and human development. While this information is not a perfect measure; it is found as valuable to help in assessing wildfire risk. If the measurement is zero, this means that the school is within the WUI and is at a higher risk for wildfire. Included as well is a “wildfire rating,” which also aids in determining how much a school is at risk for wildfire. This rating is determined by taking several factors into consideration: elevation, slope, fuel/vegetation, wind/wind speed, fuel moisture, temperature, humidity, and historical factors. The schools referenced in this report are those that have a wildfire rating of a “moderate” or greater level. Reports also are the last time the school had its fire inspection and the year it was built. Also added are best practices for helping to “harden” schools and creating defensible space in the event of wildfire. These practices are taken from guidance available through the NFPA, CAL FIRE, and other wildfire preparedness programs.



## **Fire Season Protocol**

**Belmont-Redwood Shores Elementary School District  
2960 Hallmark Drive Belmont, CA 94002.**

### **District School Sites Addressed:**

Cipriani Elementary School  
2525 Buena Vista Avenue Belmont, CA 94002-1524

Fox Elementary School  
3100 St. James Road Belmont, CA 94002-2956

Ralston Middle School  
2675 Ralston Avenue Belmont, CA 94002-1216

## Cipriani Elementary



### Report:

- 1,415 meters (0.879 mi) from WUI.
- Fire Rating - 1.5 Moderate.
- Fire inspection on 10/15/2019.
- 1953 with an all comb wood frame.

### Best Practices:

- The Arborist report needs to be completed every 3 to 5 years.
- Keep roads clear of obstructions.
- Prune trees to have crown separation of 10 to 18 ft.
- Thin trees around the school.
- Keep dry brush away from school buildings.
- Maintain grass to a maximum height of 3 to 4 in tall.

Updated July 9, 2021

## Fox Elementary



### Report:

- 90 meters (0.056 mi) from WUI.
- Fire rating 2.4 Moderate.
- Built 1970 with an all comb wood frame.

### Best Practices:

- The Arborist report needs to be completed every 3 to 5 years.
- Remove dead materials and dry grass on the hill.
- Prune tree by a shed toward the back of the school to avoid touching the shed.
- Thin trees around the school.
- Keep dry brush away from school buildings.
- Maintain grass to a maximum height of 3 to 4 in tall.

Updated July 9, 2021

## Ralston Middle



### Report:

- 913 meters (0.567 mi) from the WUI.
- Fire rating is 1.9 Moderate.
- Fire inspection on 12/06/2019.
- Built in 2012 with an all comb wood frame.

### Best Practices:

- The Arborist report needs to be completed every 3 to 5 years.
- Clear dry brush within 100 ft of the school.
- Have tree crown separation of 10 to 18 ft.
- Clear lower branches of 6 to 15 ft in height.
- Cut grass to 3 to 4 inches maximum height.
- Remove dead trees annually.

Updated July 9, 2021



## **Fire Season Protocol**

**Burlingame School District  
1825 Trousdale Drive Burlingame, CA 94010**

### **District School Sites Addressed:**

Roosevelt Elementary  
1151 Vancouver Avenue Burlingame, CA 94010-3728

## Roosevelt Elementary



### Report:

- 420 meters (0.261 mi) from the WUI.
- Fire rating is 1.8 Moderate level.
- Built in 1918 with an all comb wood frame.

### Best Practices:

- The Arborist report needs to be completed every 3 to 5 years.
- Maintain a fuel free zone up to 5 feet from a structure.
- Make sure trees do not overgrow onto the roof.
- Remove any dry brush.
- Perform annual check of trees.
- Maintain brush away from utility lines.

Updated July 9, 2021



## **Fire Season Protocol**

**Cabrillo Unified  
498 Kelly Avenue Half Moon Bay, CA 94019.**

### **District School Sites Addressed:**

Kings Mountain Elementary  
211 Swett Road Woodside, CA 94062-4709

Cunha Intermediate  
600 Church Street Half Moon Bay, CA 94019-1904

El Granada Elementary  
400 Santiago Avenue Half Moon Bay, CA 94019-5003

Half Moon Bay High School  
1 Lewis Foster Drive Half Moon Bay, CA 94019-1795

Hatch (Alvin S.) Elementary  
490 Miramontes Street Half Moon Bay, CA 94019-1824

La Costa Adult School  
498 Kelly Avenue Half Moon Bay, CA 94019-6102

Pilarcitos Alternative High  
498 Kelly Avenue Half Moon Bay, CA 94019-6102

Updated July 9, 2021

## Kings Mountain Elementary



### Report:

- Within the WUI.
- Fire rating is 2.7 High.
- Built in 2000 with an all comb wood frame.

### Best Practices:

- The Arborist report needs to be completed every 3 to 5 years.
- Clear dry brush near the entrance of the school.
- Keep roads cleared to ensure access.
- Prune trees to avoid overgrowth onto the roof.
- Keep trees at a distance from buildings.
- Maintain trees thinned to avoid ignition.

Updated July 9, 2021

## Cunha Intermediate



### Report:

- Within WUI.
- Fire rating is 1.6 Moderate level.
- Built in 1950 with an all comb wood frame.

### Best Practices:

- The Arborist report needs to be completed every 3 to 5 years.
- Maintain grass at 3 to 4 inches height.
- Keep roads clear and have access available.
- Avoid tree overgrowth where applicable.
- Remove the drying brush frequently.

Updated July 9, 2021

## El Granada Elementary



### Report:

- Within the WUI.
- 1.9 rating Moderate level.
- Built in 1959 with an all comb wood frame.

### Best Practices:

- The Arborist report needs to be completed every 3 to 5 years.
- Keep grass at the maximum 3 to 4 inches height.
- Prunes trees to at least 6 ft height.
- Avoid tree overgrowth onto the roof of the buildings.
- Remove dying trees with an annual audit of trees.
- Remove dry brush around the school grounds.

Updated July 9, 2021

## Half Moon Bay High School



### Report:

- Within the WUI.
- Fire rating of 1.6 Moderate level.
- Built in 1962 with an all comb wood frame.

### Best Practices:

- The Arborist report needs to be completed every 3 to 5 years.
- Entry should be clear of any obstructions.
- Remove dry brush from the surrounding area.
- Trees pruned thin with crown separation of 10-18 ft.
- Branches above 6 to 15 ft high.
- Clear buildings of fuel at least 3 to 5 ft.

Updated July 9, 2021

## Hatch Elementary



### Report:

- Within WUI.
- Rating is a 1.5 Moderate.
- Built in 1959 with an all comb wood frame.

### Best Practices:

- The Arborist report needs to be completed every 3 to 5 years.
- Avoid grass overgrowth.
- Brush should be cleared.
- Maintain entries clear.
- Trees should be pruned thin vertically.
- Tree crown separation between 10-18 ft.

Updated July 9, 2021

## Pilarcitos Alternative & La Costa Adult School



### Report:

- Within the WUI.
- 1.5 wildfire rating.
- Built in 1978 with an all comb wood frame.

### Best Practices:

- The Arborist report needs to be completed every 3 to 5 years.
- Entry should be clear of any obstructions.
- Remove dry brush from the surrounding area.
- Trees pruned thin with crown separation of 10-18 ft.
- Branches above 6 to 15 ft high.
- Clear buildings of fuel at least 3 to 5 ft.



**SAN MATEO COUNTY SCHOOLS  
INSURANCE GROUP**  
—A Public Entity—

## **Fire Season Protocol**

**Hillsborough City**  
**300 El Cerrito Avenue Hillsborough, CA 94010**

### **District School Sites Addressed:**

North Hillsborough  
545 Eucalyptus Avenue Hillsborough, CA 94010-6404

West Hillsborough  
376 Barbara Way Hillsborough, CA 91010-6760

Crocker (William H.) Middle  
2600 Ralston Avenue Hillsborough, CA 94010-6544

## North Hillsborough



### Report:

- 553 meters (0.343 mi) from WUI.
- Rating is 1.5 Moderate level.
- Built in 1949 with an all comb wood frame.
- Fire inspection in the month of November of 2019.

### Best Practices:

- The Arborist report needs to be completed every 3 to 5 years.
- Prune trees consistently to avoid overgrowth.
- Keep the entrance clear from obstructions.
- Grass maintained between 3 to 4 in tall.
- Dry brush removal where necessary.
- Tree crown separation of 10-18 ft.

Updated July 9, 2021

## West Hillsborough



### Report:

- Within the WUI.
- Fire rating is at 1.6 Moderate level.
- Built in 1953 with an all comb wood frame.
- Fire inspection in the month of September in 2019.

### Best Practices:

- The Arborist report needs to be completed every 3 to 5 years.
- Trees should be pruned on a consistent schedule.
- Grass maintained at 3 to 4 in tall.
- Entrance maintained clear of obstruction.
- Tree crown separation of 10-18 ft.

Updated July 9, 2021

## Crocker Middle



### Report:

- 394 meters (0.245 mi) from WUI.
- Fire rating is 1.8 Moderate level.
- Built in 1959 with an all comb wood frame.
- Fire inspection in the month of October in 2019.

### Best Practices:

- The Arborist report needs to be completed every 3 to 5 years.
- Tree crown separation recommended.
- Avoid overgrowth of trees onto the structures.
- Clear roadway entries to ensure access.
- Perform annual audit of tree health.
- Prune trees up to 6 feet off the ground.

Updated July 9, 2021



## **Fire Season Protocol**

**Jefferson Union High**

**699 Serramonte Boulevard #100 Daly City, CA 94015**

### **District School Site Addressed:**

Terra Nova High  
1450 Terra Nova Boulevard Pacifica, CA 94044-3615

## Terra Nova High



### Report:

- Within a WUI community.
- Wildfire rating at 1.6 Moderate level.
- Built in 1964 with masonry construction and a wooden roof.

### Best Practices:

- The Arborist report needs to be completed every 3 to 5 years.
- Annual audit of tree health needs to be performed.
- Crown separation of 10 to 18 feet
- Remove dry materials and brush.
- Crown separation required further from structures as well but much less.
- Cut tree branches to prevent overgrowth.

Updated July 9, 2021



## **Fire Season Protocol**

**La-Honda Pescadero  
360 Butano Cut Off Pescadero, CA 94060**

### **District School Sites Addressed:**

La Honda Elementary  
450 Sears Ranch Road La Honda, CA 94020-0087

Pescadero Elementary  
620 North Street Pescadero, CA 94060

Pescadero High School  
350 Butano Cut Off Pescadero, CA 94060

Pescadero Middle School  
350 Butano Cut Off Pescadero, CA 94060

## La Honda Elementary



### Report:

- Within a WUI community
- Wildfire rating of 2.9 High level.
- Fire inspection was on 12/09/2019.
- Built in 1960 with an all comb wood frame.

### Best Practices:

- The Arborist report needs to be completed every 3 to 5 years.
- Annual audit of trees must be performed.
- Grass maintained at appropriate lengths 3 to 4 feet tall.
- Trees near structures must be pruned.
- Establish a fuel free zone 3 to 5 feet from structures.
- Do not allow trees to over grow onto the roof.

Updated July 9, 2021

## Pescadero Elementary



### Report:

- Within a WUI community.
- Fire rating is at 2.7 High level.
- Fire inspection was on 11/21/2019.
- Built in 1960 with an all comb wood frame.

### Best Practices:

- The Arborist report needs to be completed every 3 to 5 years.
- Cut grass to a maximum height of 4 inches tall.
- Clear drying brush.
- Ensure roads are clear of any obstructions.
- Tree crown separation of 10-18 ft.
- Remove dead trees consistently.

Updated July 9, 2021

## Pescadero High School & Middle School



### Report:

- Fire rating of 2.7 High level.
- Within a WUI community.
- Fire inspection date was on 11/21/2019.
- Built in 1960 with an all comb wood frame.

### Best Practices:

- The Arborist report needs to be completed every 3 to 5 years.
- Keep trees pruned consistently.
- Maintain grass at 3 to 4 inches tall.
- Tree crowns must be separated 10 to 18 ft.
- Lower tree branches must be pruned 6 to 15 ft.
- Ensure roads are clear of obstructions.

Updated July 9, 2021



**SAN MATEO COUNTY SCHOOLS  
INSURANCE GROUP**  
—A Public Entity—

## **Fire Season Protocol**

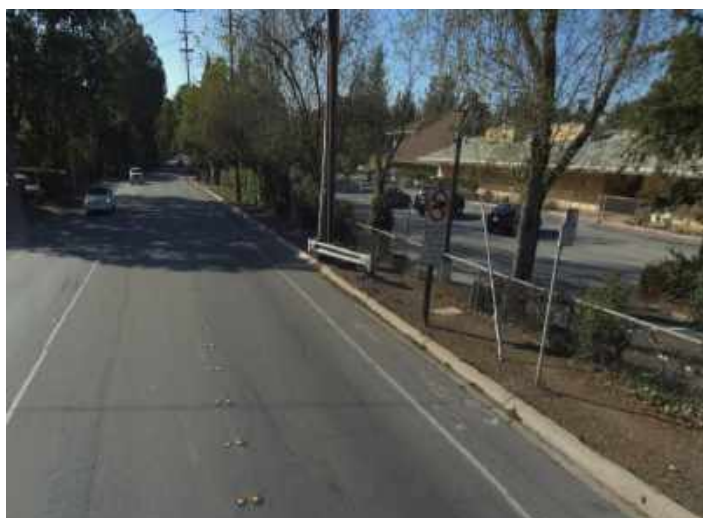
**Las Lomas Elementary  
1011 Altschul Avenue Menlo Park, CA 94025**

### **District School Sites Addressed:**

Las Lomas Elementary  
299 Alameda de las Pulgas Atherton, CA 94027-6469

Updated July 9, 2021

## Las Lomitas Elementary



### Report:

- 42 meters (0.026 mi) from a WUI community.
- Fire rating is 1.5 Moderate level.
- Built in 1968 with masonry construction and a wooden roof.

### Best Practices:

- The Arborist report needs to be completed every 3 to 5 years.
- Tree crown separation of 10 to 18 ft.
- Lower tree branches kept at a height 6 to 15, dependent on tree height.
- Avoid trees overgrowing onto the roof of structures.
- Remove dry and dead materials constantly.
- Cut grass to a height of 4 inches maximum.

Updated July 9, 2021



## **Fire Season Protocol**

**Menlo Park City  
181 Encinal Avenue Atherton, CA 94027**

### **District School Sites Addressed:**

Hillview Middle  
1100 Elder Avenue Menlo Park, CA 94025-5503

## Hillview Middle



### Report:

- 551 meters (0.342 mi) from a WUI community.
- Fire rating is at 1.5 Moderate level.
- Built in 2012 with a non comb steel frame.

### Best Practices:

- The Arborist report needs to be completed every 3 to 5 years.
- Avoid overgrowth on top of structures.
- Create a fuel free zone around the school grounds.
- Clear dry brush around the school as well.
- Thinning of trees with crown separation of 10 to 18 ft.
- Grass should be cut to 3-4 inches height.

Updated July 9, 2021



**SAN MATEO COUNTY SCHOOLS  
INSURANCE GROUP**

*—A Public Entity—*

## **Fire Season Protocol**

**Pacifica**

**375 Reina Del Mar Pacifica, CA 94044**

### **District School Sites Addressed:**

Oddstad Elementary

930 Oddstad Boulevard Pacifica, CA 94044-4400

Updated July 9, 2021

## Oddstad Property



### Report:

- Within a WUI community.
- Fire rating is at 1.7 Moderate level.
- Built in 1964 with masonry construction and a wooden roof.

### Best Practices:

- The Arborist report needs to be completed every 3 to 5 years.
- Ensure grass is maintained between 3 to 4 inches tall.
- Remove dying trees annually and clear dry brush.
- Tree crowns separated between 10 to 18 ft dependent on tree height.
- Remove dead materials around the site
- Maintain a fuel free zone within 3 to 5 ft of structures..

Updated July 9, 2021



**SAN MATEO COUNTY SCHOOLS  
INSURANCE GROUP**  
—A Public Entity—

## **Fire Season Protocol**

**Portola Valley  
4575 Alpine Road Portola Valley, CA 94028**

### **District School Sites Addressed:**

Ormondale Elementary  
200 Shawnee Pass Portola Valley, CA 94028-7631

Corte Madera  
4575 Alpine Road Portola Valley, CA 94028-8040

## Ormondale Elementary



### Report:

- Within a WUI community.
- Fire rating is 2.2 Moderate level.
- Built in 2002 with an all comb wood frame.

### Best Practices:

- The Arborist report needs to be completed every 3 to 5 years.
- Avoid tree overgrowth onto the roof of structures.
- Avoid grass overgrowth maintaining 3 to 4 inches in height.
- Keep roads clear of obstructions.
- Remove dead materials and dry brush.
- Perform an annual audit of tree health to determine if removal is required.

## Corte Madera



### Report:

- Within the WUI community.
- Fire rating is 2.3 Moderate level.
- Built in 2001 with an all comb wood frame.

### Best Practices:

- The Arborist report needs to be completed every 3 to 5 years.
- Trees should be pruned on a consistent schedule.
- Remove dry brush and other materials from the area.
- Have a fuel free zone within 3 to 5 ft of structures.
- Dead material removal extends to 100 ft, but more relaxed requirements further out.
- Further out, there is much less required in vegetation management.



**Fire Season Protocol**  
**Redwood City**  
**750 Bradford Street Redwood City, CA 94063**

**District School Sites Addressed:**

Clifford Elementary  
225 Clifford Avenue Redwood City, CA 94062-3205

Roy Cloud Elementary  
3790 Red Oak Way Redwood City, CA 94062-1133

## Clifford Elementary



### Report:

- 872 meters (0.542 mi) from the WUI community.
- Fire rating is at 1.9 Moderate level.
- Built in 1968 with an all comb wood frame.

### Best Practices:

- The Arborist report needs to be completed every 3 to 5 years.
- Remove dry and dead materials.
- Prune low tree branches to height of 6 to 15 ft.
- Establish a fuel free zone within 3 to 5 feet of all structures.
- Keep entrances clear of obstruction.

Updated July 9, 2021

## Roy Cloud Elementary



### Report:

- Within a WUI community.
- Fire rating is 1.7 Moderate.
- Built in 1957 with masonry construction and a wooden roof.

### Best Practices:

- The Arborist report needs to be completed every 3 to 5 years.
- Keep grass trimmed to 3 to 4 inches tall.
- Clear dry brush around the campus.
- Remove dead materials.
- Create tree crown separation of 10-18 ft.
- Clear roads of obstructions.

Updated July 9, 2021



**SAN MATEO COUNTY SCHOOLS  
INSURANCE GROUP**

*—A Public Entity—*

## **Fire Season Protocol**

**San Carlos**

**1200 Industrial Road San Carlos, CA 94070**

### **District School Sites Addressed:**

Charter Learning Center  
750 Dartmouth Avenue San Carlos, CA 94070-1769

Arundel Elementary  
200 Arundel Road San Carlos, CA 94070-1945

Brittan Acres Elementary  
2000 Belle Avenue San Carlos, CA 94070-3730

Heather Elementary  
2757 Melendy Drive San Carlos, CA 94070-3604

Mariposa Upper Elementary  
750 Dartmouth Avenue San Carlos, CA 94070-1769

Updated July 9, 2021

## Mariposa Upper & Tierra Linda Middle



### Report:

- 827 meters (0.514 mi) from the WUI community.
- Fire rating is 1.7 Moderate level.
- Built in 1952 with an all comb wood frame.

### Best Practices:

- The Arborist report needs to be completed every 3 to 5 years.
- Prune low branches to maintain a height between 6 and 15 ft.
- Maintain grass to a height between 3 and 4 inches.
- Tree crown separation of 10 to 18 ft between.
- Create a fuel free zone within 3 to 5 ft of any structure.
- Remove any dry materials or dead plants.

Updated July 9, 2021

## Charter Learning Center



### Report:

- 827 meters (0.514 mi) From WUI.
- Fire rating is 1.7 Moderate level.
- Built in 2018 with an all comb wood frame.

### Best Practices:

- The Arborist report needs to be completed every 3 to 5 years.
- Clear dry brush on the hill near the school.
- Maintain grass height of 3 to 4 inches tall.
- Remove dead trees annually.
- Maintain roads clear of obstructions.
- Tree crown separation of 10-18 ft.

Updated July 9, 2021

## Arundel Elementary



### Report:

- 1,203 meters (0.748 mi) from a WUI community.
- Fire rating is 1.6 Moderate level.
- Built in 1948 with an all comb wood frame.

### Best Practices:

- The Arborist report needs to be completed every 3 to 5 years.
- Remove dying trees annually.
- Prune trees to maintain distance from buildings.
- Maintain required clearance levels of 6 to 15 ft on lower tree branches.
- Ensure there is no brush building up.
- Maintain crown separation between trees of 10 to 18 ft.

Updated July 9, 2021

## Brittan Acres Elementary



### Report:

- 1,233 meters (0.766 mi) from WUI.
- Fire rating is 1.5 Moderate.
- Built in 1953 with an all comb wood frame.

### Best Practices:

- The Arborist report needs to be completed every 3 to 5 years.
- Clear dry brush near structures.
- Lower tree branches must be pruned to a height of 6 to 15 ft.
- Remove dead trees annually.
- Prune shrubs between 30 and 100 ft from structures.
- Creation of a fuel free zone around the school.

Updated July 9, 2021

## Heather Elementary



### Report:

- 560 meters (0.348 mi) away from WUI.
- Fire rating 1.8 Moderate.
- Built in 1963 with an all comb wood frame.

### Best Practices:

- The Arborist report needs to be completed every 3 to 5 years.
- Remove brush and debris near the campus.
- Prune trees close to the buildings.
- Grass maintained to 3 to 4 inches in height.
- Tree crown separation of 10 to 18 ft.
- Avoid tree overgrowth.

Updated July 9, 2021



## **Fire Season Protocol**

**San Mateo County Office of Education  
101 Twin Dolphin Drive Redwood City, CA 94065**

### **District School Sites Addressed:**

Canyon Oaks Youth Center  
400 Edmonds Road Redwood City, CA 94062-3803

Gateway Center  
35 Tower Road San Mateo, CA 94402-4000

Hillcrest at Youth Services Center  
10 Loop Road San Mateo, CA 94402-4035

Margaret J. Kemp  
400 Paul Scannell Drive San Mateo, CA 94402

## Canyon Oaks Youth Center



### Report:

- Within a WUI community.
- Wildfire rating of 2.5 High.

### Best Practices:

- The Arborist report needs to be completed every 3 to 5 years.
- Keep clearance levels at minimum required length of 6 to 15 ft for lower tree branches.
- Prune the trees closest to buildings.
- Clear all dry brush and dead materials within 100 ft of structures.
- Create a fuel free zone within 3 to 5 ft of structures.
- Clear lower tree branches to 6 to 15 ft height.
- Thin trees to maintain tree crown separation of 10 to 18 ft.

## Gateway Center



### Report:

- Within the WUI.
- Wildfire rating is 1.9 Moderate.
- Fire inspection was 10/13/2019.

### Best Practices:

- The Arborist report needs to be completed every 3 to 5 years.
- Keep clearance levels at minimum required length of 6 to 15 ft for lower tree branches.
- Prune the trees closest to buildings.
- Clear all dry brush and dead materials within 100 ft of structures.
- Create a fuel free zone within 3 to 5 ft of structures.
- Clear lower tree branches to 6 to 15 ft height.

Updated July 9, 2021

## Hillcrest at Youth Services Center



### Report:

- 30 meters away from WUI.
- Fire rating of 1.9 Moderate.

### Best Practices:

- The Arborist report needs to be completed every 3 to 5 years.
- Keep clearance levels at minimum required length of 6 to 15 ft for lower tree branches.
- Prune the trees closest to buildings.
- Clear all dry brush and dead materials within 100 ft of structures.
- Create a fuel free zone within 3 to 5 ft of structures.
- Clear lower tree branches to 6 to 15 ft height.

## Margaret J. Kemp



### Report:

- 30 meters away from WUI.
- Fire rating is 2.6 High.

### Best Practices:

- The Arborist report needs to be completed every 3 to 5 years.
- Keep clearance levels at minimum required length of 6 to 15 ft for lower tree branches.
- Prune the trees closest to buildings.
- Clear all dry brush and dead materials within 100 ft of structures.
- Create a fuel free zone within 3 to 5 ft of structures.
- Clear lower tree branches to 6 to 15 ft height.

Updated July 9, 2021



**SAN MATEO COUNTY SCHOOLS  
INSURANCE GROUP**

*—A Public Entity—*

## **Fire Season Protocol**

**San Mateo-Foster City  
1170 Chess Drive Foster City, CA 94044**

### **District School Site Addressed:**

Highlands Elementary  
2320 Newport Street San Mateo, CA 94402

## Highlands Elementary



### Report:

- Within a WUI community.
- Wildfire rating 1.8 Moderate.
- Built in 1957 with an all comb wood frame.
- 46 employees at the school site.

### Best Practices:

- The Arborist report needs to be completed every 3 to 5 years.
- Keep clearance levels at minimum required length of 6 to 15 ft for lower tree branches.
- Prune the trees closest to buildings.
- Clear all dry brush and dead materials within 100 ft of structures.
- Create a fuel free zone within 3 to 5 ft of structures.
- Clear lower tree branches to 6 to 15 ft height.

Updated July 9, 2021



## **Fire Season Protocol**

**Sequoia Union High  
480 James Avenue Redwood City, CA 94062**

### **District School Sites:**

Carlmont High  
1400 Alameda de las Pulgas Belmont, CA 94002-3514

## Carlmont High School



### Report:

- 664 meters away from WUI.
- Wildfire rating is 1.8 Moderate.
- Fire inspection on 3/12/2019.
- Built in 1951 with masonry construction and a wooden roof.

### Best Practices:

- The Arborist report needs to be completed every 3 to 5 years.
- Ensure dry trees are monitored on a consistent schedule.
- Create vertical clearance between shrubs and trees.
- Remove lower tree branches 6 to 15 feet from the ground.
- Cut grass to a height of 3 to 4 inches tall.
- Create a fuel free zone 3 to 5 ft from all structures.

Updated July 9, 2021